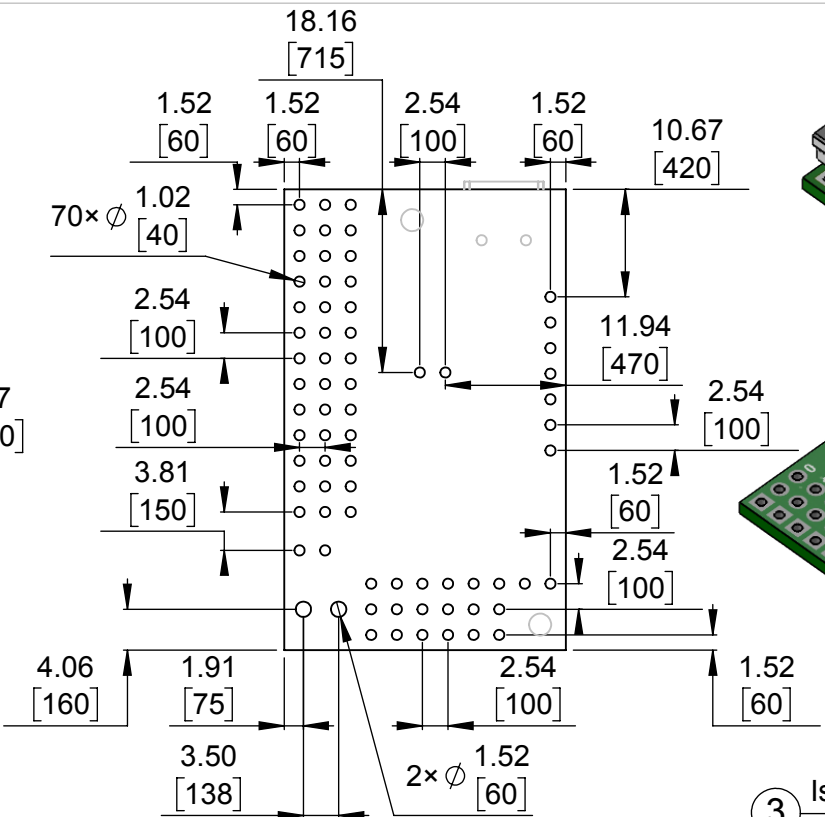
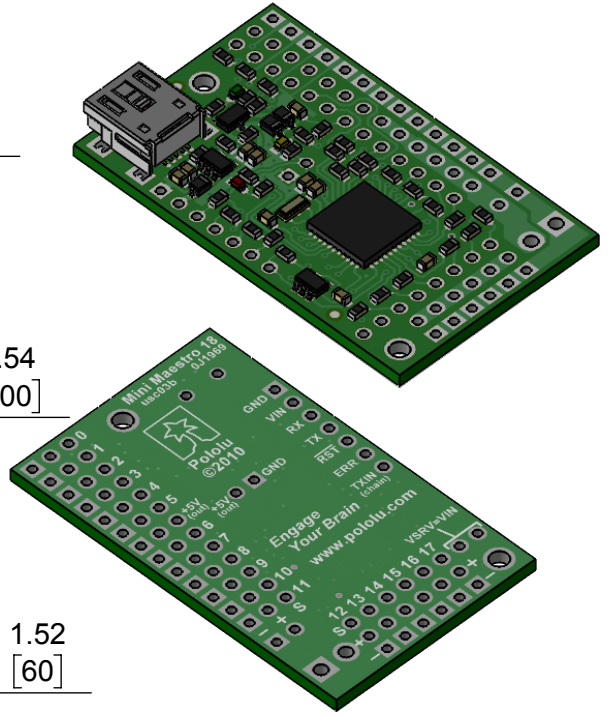


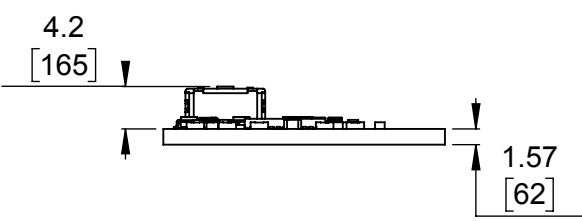
1 Board dimensions (top view)  
Scale 4:3



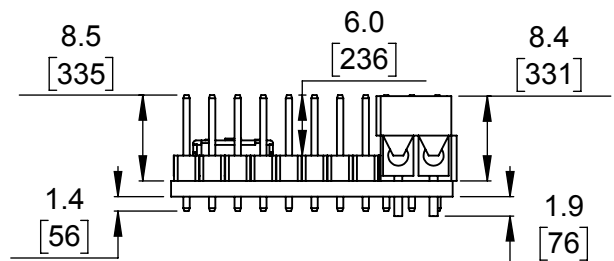
2 Connector callouts (bottom view)  
Scale 4:3



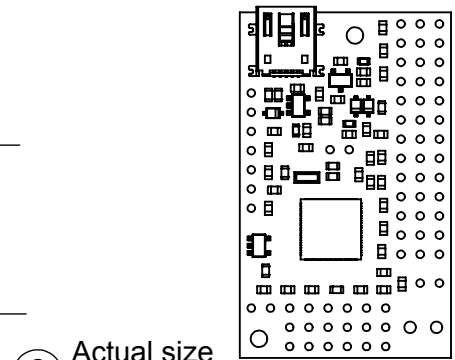
3 Isometric view  
Scale 4:3



4 Profile  
Scale 4:3



5 Profile (with through-hole connectors)  
Scale 4:3



6 Actual size  
Scale 1:1

- To get the specified scale, select 100% in print settings.
- Drill location tolerance:  $\pm 0.1$  [ $\pm 5$ ].
- Board edge tolerance:  $\pm 0.3$  [ $\pm 10$ ].

<a href="https://www.pololu.com/product/1354">https://www.pololu.com/product/1354</a>	
Name: Mini Maestro 18-Channel USB Servo Controller	Item number: 1354, 1355
Drawing date: 20 May 2016	
Units: mm [mil]	PCB dev code: usb03b
 © 2016 Pololu Corporation	