

Analog Sound Sensor SKU: DFR0034

From Robot Wiki

Contents

- 1 Introduction
- 2 Specification
- 3 Connection Diagram
- 4 Sample Code
- 5 Version History



Analog Sound Sensor SKU:DFR0034

Introduction

This is an updated version of the Analog Sound Sensor. Analog Sound Sensor is typically used in detecting the loudness in ambient, the Arduino can collect its output signal by imitating the input interface. You may use it to make some funny interactive works such as a voice operated switch.

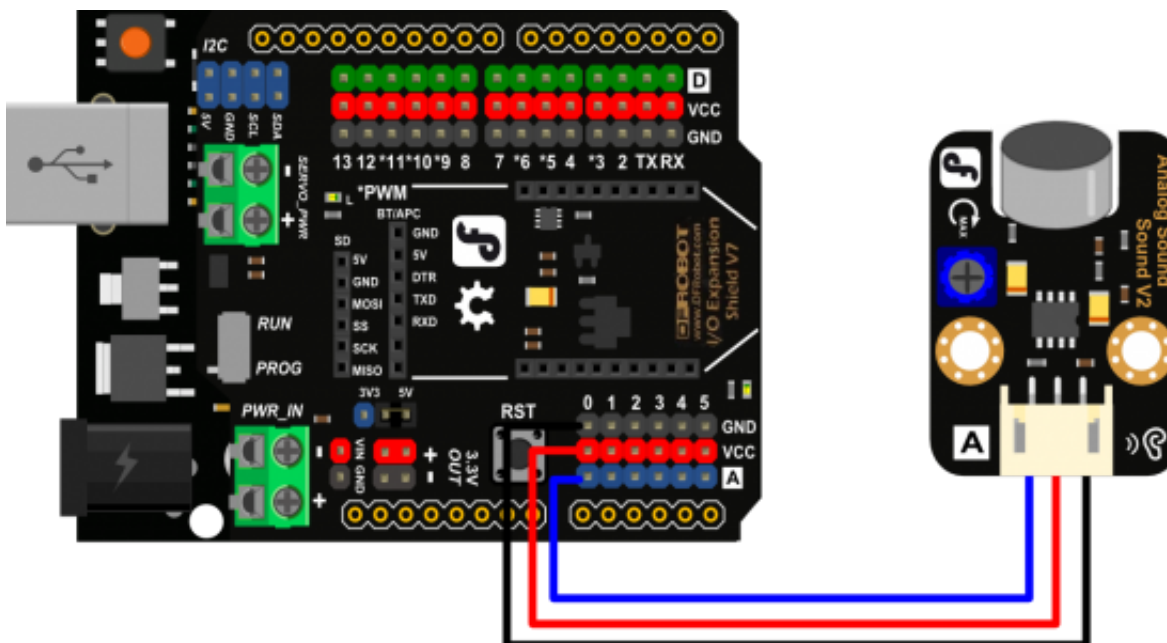
As one of our new version of breakout boards, we have improved the analog sound sensor in below:

- Wide voltage range from 3.3V to 5V
- Standard assembling structure (two 3mm holes with multiple of 5cm as interval)
- Easily recognitive interfaces of sensors ("A" for analog and "D" for digital)
- Icons to simply illustrate sensor function
- High quality connector
- Immersion gold surface

Specification

- Supply Voltage: 3.3V to 5V
- Detects the sound intensity
- Interface: Analog
- Size:22x30mm

Connection Diagram



Sample Code

```
?
1 void setup()
2 {
3   Serial.begin(9600); // open serial port, set the baud rate to 9600 bps
4 }
5 void loop()
6 {
7   int val;
8   val=analogRead(0); //connect mic sensor to Analog 0
9   Serial.println(val,DEC); //print the sound value to serial
10  delay(100);
11}
```

Retrieved from "https://www.dfrobot.com/wiki/index.php?title=Analog_Sound_Sensor_SKU:_DFR0034&oldid=7165"

Categories: Product Manual | DFR Series | Sensors

- This page was last modified on 9 September 2013, at 06:28.
- This page has been accessed 5,648 times.