



SR-201 Network Relay Quick Start Guide

Table of Content

Connect to your device	2
Change configurations	3
Setup remote control via internet.....	4
Android software	5
Integrate to your applications	6
Reset factory defaults	7



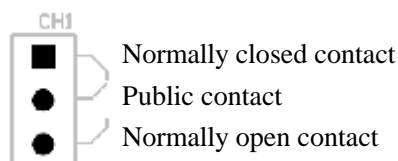
Connect to your device

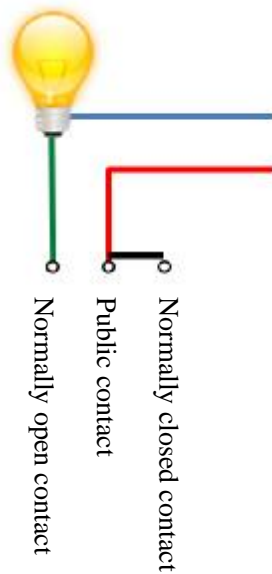
1. Connect power supply: DC5V (via micro USB) or alternatively DC9-24V (via green KF-350 2 PIN connector), you should see the STAT LED turns on.
2. Connect network cable, you should see the RJ45 green LED turns on and yellow LED blinks.
3. The default IP address of SR-201 network relay is 192.168.1.100, therefore, your computer should be configured in the same 192.168.1 subnet to connect to it. You can try to ping the device to verify the network connection.
4. Run *Device Controller for SR-201*, you should be able to turn on and turn off the relays.



Hint: SR-201 network relay listens to port 6722 (for TCP control), 6723 (for UDP control) and 5111 (TCP / for configuration). It doesn't provide http service, and won't response to your browser.

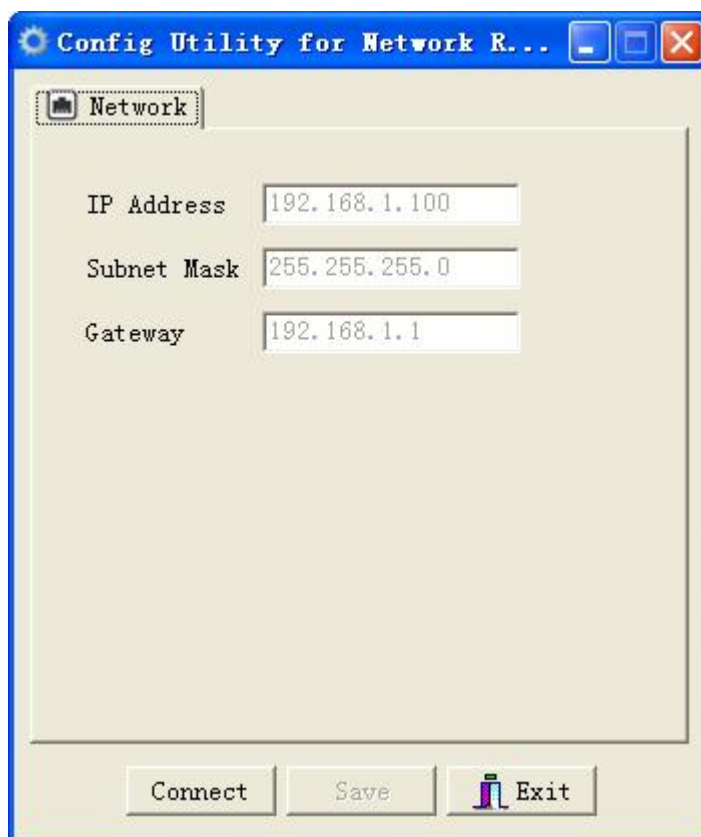
5. Connect external circuit to the relay.





Change configurations

1. Run *Config Utility*, click Connect button and connect to your device.

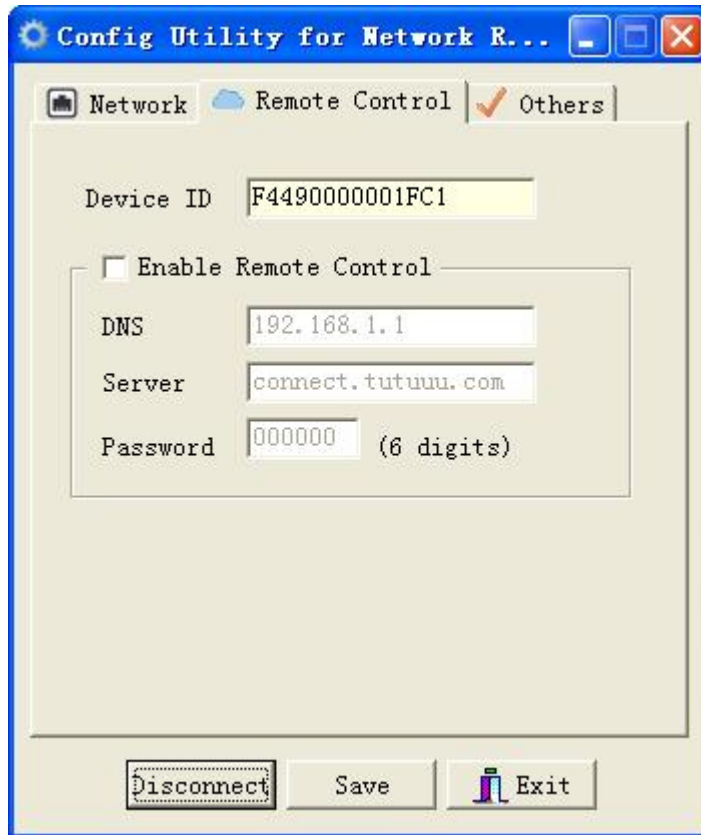


2. Enter IP address, subnet mask, gateway and click Save button.



Setup remote control via internet

1. Run *Config Utility*, connect to your device, and then switch to the Remote Control tab.



2. Check Enable Remote Control, enter DNS, server and password for remote control via internet.

- Ø Please review device IP address, subnet mark and gateway to ensure the device can connect to internet with those configurations.
- Ø connect.tutuuu.com is the default server. You can setup your own application server to control your devices. Please contact support@tutuuu.com.
- Ø Password will be verified upon receiving commands from internet.

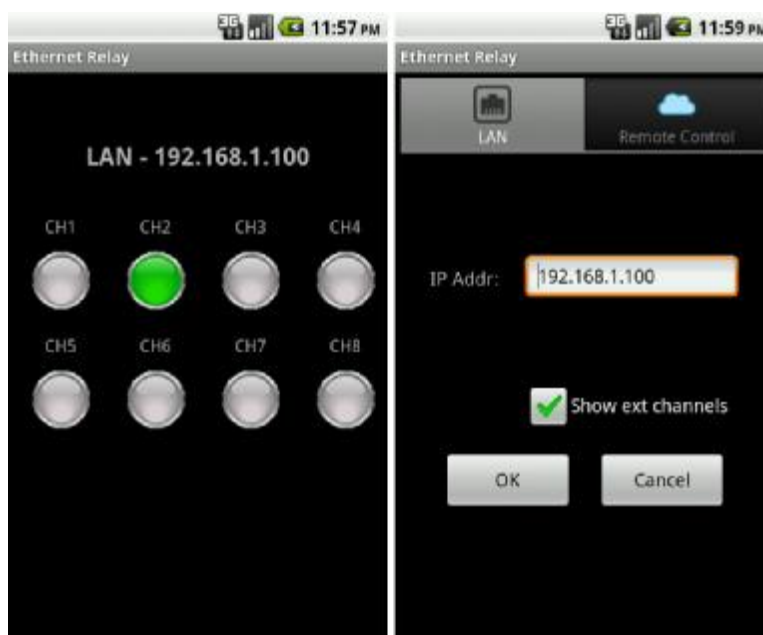
Hint: STAT LED will keep flashing if Enable Remote Control is checked but the device cannot connect to the internet.

3. Copy Device ID and change the settings in *Device Controller for SR-201* to remote control your device via internet.



Android software

Android app is available in this package. It can be configured as a client for remote control via internet.



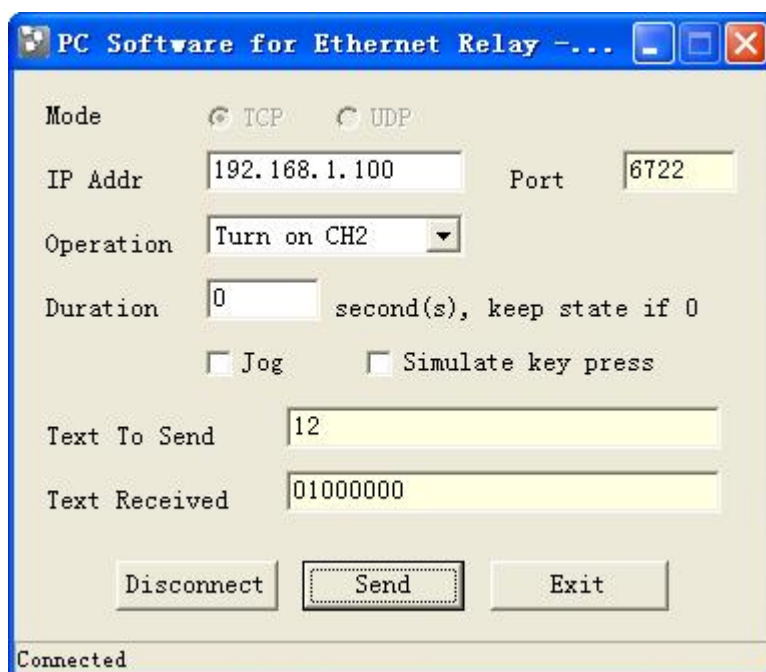


Integrate to your applications

Source codes for all above software are available in this package. However, the internet remote control features were removed from the source codes because the public service, connect.tutuuiu.com, we provide does not support third party connections. If you would like to setup your own application server to control your devices via internet, we will then provide you the full version that will work together with your own server.

The *PC Software (VB and Delphi)* demonstrates the network protocol to control SR-201 device via LAN. It supports TCP / UDP and the full command set.

1. Select TCP or UDP mode.
2. Enter IP address, and select Operation and other parameters. You will see the string to be sent to the device.
3. In case of TCP, click Connect button, and then click Send button. In case of UDP, click Send button directly.
4. In case of TCP, you will see the string received from the device. This reply message contains 8 digits, each digit will be either 0 or 1. 0 means the channel is off and 1 means the channel is on. For example, if the reply message is 01000000, it shows CH2 is on, and the other channels are off.



You can integrate *DevConfig.dll* to your application so that the end users will be able to configure SR-201 network relay from your program. Please refer to *Source Code for Config Utility*.



Reset factory defaults

1. Use a jumper to connect the 2 PINs marked under CLR.



2. Turn off the device, and then turn it on again.
3. Pull out the jumper.