

HDMI Interface 5 Inch 800x480 TFT Display

From Elecrow

Contents

- 1 Description
- 2 Features
- 3 Specifications
- 4 Usage
- 5 Resource

Description

This 5 inch TFT Display with Touch Screen is a mini panel-mountable HDMI monitor. So small and simple, but you can use this display with any computer that has HDMI output, and the shape makes it easy to attach to a electronic product. Although the 800x480 common HDMI display is made for Raspberry Pi, we can use it other where not only for Raspberry Pi.



Features

- A good solution for those seeking for a bigger resolution display
- Good touch response
- Large viewing angle
- Fast response time
- Not only for Raspberry Pi
- Not only for mini-PCs, it can work as a computer monitor
- With detail user guide and image

Specifications

- 5 inch TFT Resistive touch screen display, 800x480 Resolution
- HDMI input
- Usb touch and power, 5V@1A
- Lcd driver IC: ILI9486L
- Refresh rate: 60HZ
- Lcd Size : 143mm*83mm

Usage

When users connect the Raspberry Pi to use, they need to configure the official system. Or you can also burn the configured system image directly.

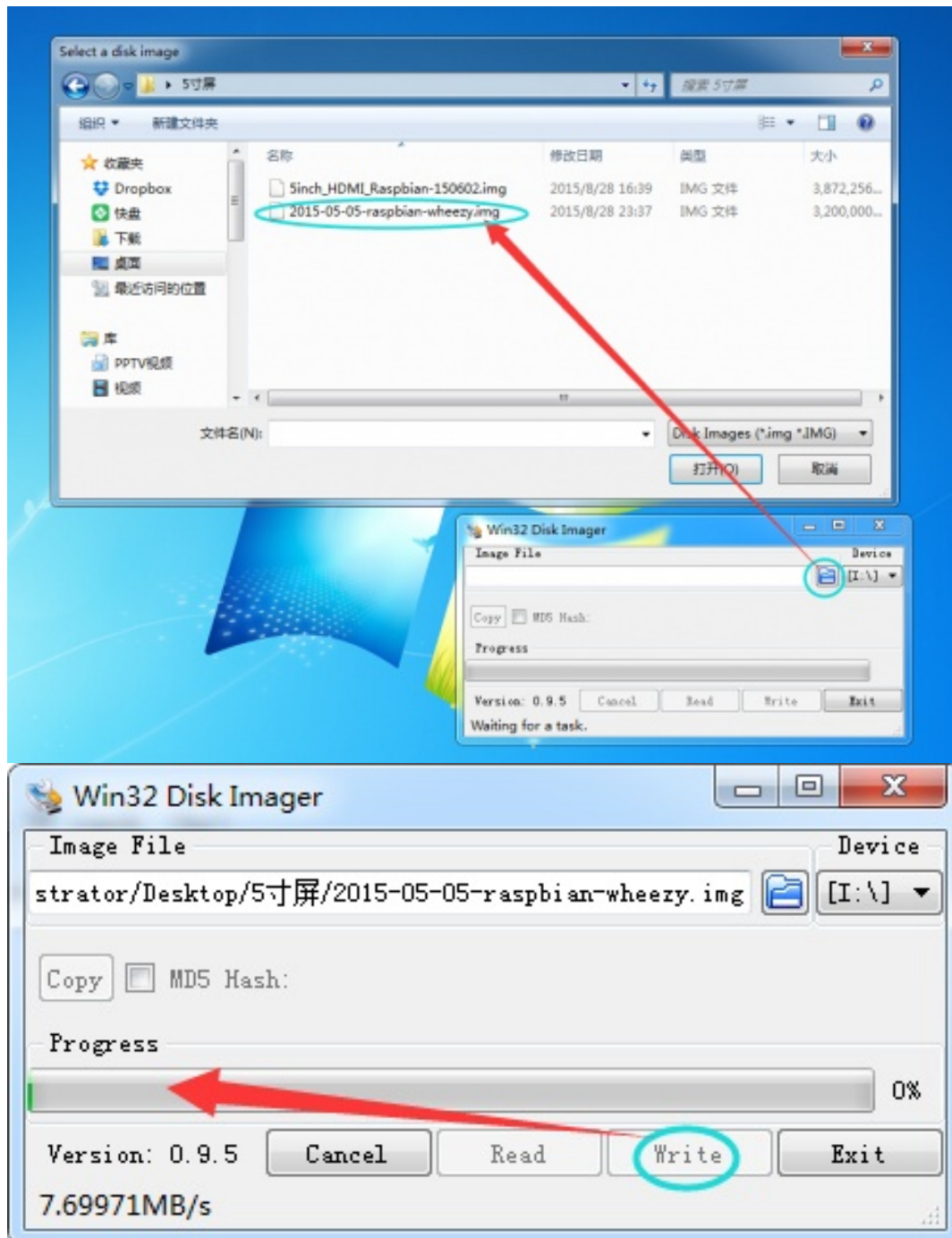
1.Download the .img file to the computer.

2.Connect the TF card to computer and apply the SDFormatter.exe software, then formatter the TF card.



Note: the capacity should not lower than 4 GB. At this operation, a SD of TF card will be used and user need to buy one.

3.Open the Win32DiskImager.exe software, choose the system image prepared and click 「write」 to burn the system file.



4. Transmission the driver to your pi.

5. `sudo raspi-config`

Enable Boot to Desktop/Scratch -> Desktop Log in as user 'pi' at the graphical desktop

```
tar xvf LCD-show-150602.tar.gz<br>
cd LCD-show
sudo ./LCD5-show
```

6. Wait A Few Minutes, when the system reboot ok, you can see that.



Resource

- User manual (http://www.elecrow.com/wiki/index.php?title=File:User_manual.pdf)
- LCD Drive (<http://www.elecrow.com/hdmi-interface-5-inch-800x480-tft-display-p-1384.html>)
- Config file (<http://www.elecrow.com/wiki/index.php?title=File:config.zip>)
- Configured system (<http://pan.baidu.com/s/1gdASaVD>)
- 2015-05-05-raspbian-wheezy (<http://yunpan.cn/cmcmkfQQFjzP5>) (Fetch Code: 7a6b)

Retrieved from "http://www.elecrow.com/wiki/index.php?title=HDMI_Interface_5_Inch_800x480_TFT_Display&oldid=13831"

-
- This page was last modified on 24 September 2015, at 01:39.
 - This page has been accessed 135 times.